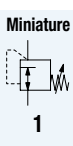
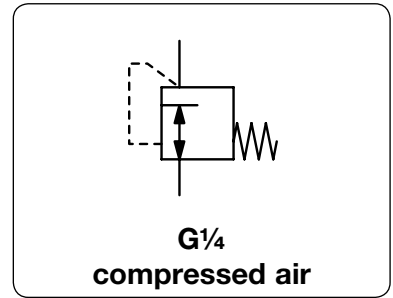
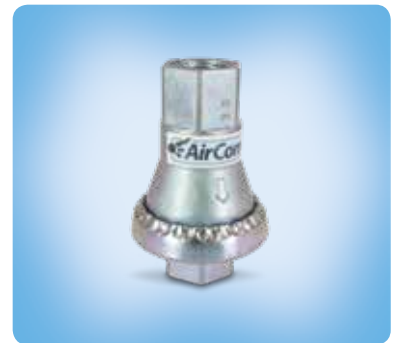


Description	In-Line pressure regulator with factory-set outlet pressure, reducing from e.g. 15 bar to 5 bar. The regulator is suited for basic pressure control only with an outlet pressure tolerance of approx. $\pm 10\%$ ² . Non-relieving function, therefore not recommended for applications such as nailers
Benefits	<ul style="list-style-type: none"> • Higher safety through lower pressure. Tools and equipment protected against pressure damages • Cost reduction through substantially reduced air consumption • Noise reducing for tools
Media	compressed air, non-corrosive gases
Supply pressure	max. 18 bar
Adjustment	Select the pressure regulator according to the desired outlet pressure. The outlet pressure cannot be subsequently adjusted. This safeguards against tampering.
Relieving function	non-relieving
Temperature range	0 °C to 60 °C / 32 °F to 140 °F
Material	Body: zinc Elastomer: NBR/Buna-N



Dimensions			Flow rate	Supply pressure	Connection thread	Outlet pressure	Order number
Ø A	B	A/F	l/min*1	max. bar	G	bar*2	

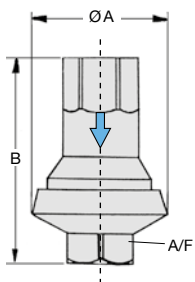
Regulator for air „SaveAir®“				P: max. 18 bar, non-relieving, accuracy *2, made of zinc		231	
34	52	17	400	18	G1/4	1	231A0210
			600			2	231A0220
			700			3	231A0230
			700			4	231A0240
			700			5	231A0250
			800			6	231A0260
			800			7	231A0270
			800			8	231A0280



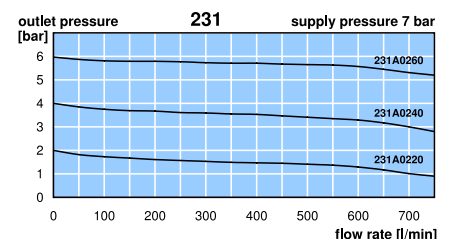
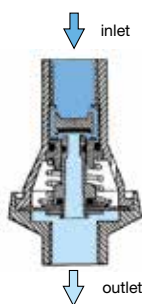
231

Special options, add the appropriate letter

NPT	connection thread	231A 12 . .
deviant pressure range	indicate on order	231A . 2XX



231



*1 $P_0 = 12 \text{ bar}$; $\Delta p = 0.5 \text{ bar}$

*2 Tolerance: $< 4 \text{ bar} \pm 0.3 \text{ bar}$ (air, $P_0 = 6 \text{ bar}$, 10 NI/min)
 $\geq 4 \text{ bar} \pm 10\%$ (air, $P_0 = 10 \text{ bar}$, 10 NI/min)

